



**COLDGUARD KIT  
ASSEMBLY INSTRUCTIONS FOR  
GM SAVANA / CHEV EXPRESS EXTENDED  
LENGTH BODY CARGO VANS ONLY**  
U.S Patent # 6,142,550



**IMPORTANT NOTICE**

Do not alter the kit by cutting or trimming the panels without first contacting Van Liner on Tel # 905-634-9989.

Any unauthorized alterations will void the warranty on the product.

Please make sure to completely familiarize yourself with these instructions before beginning the install.

**TO UNPACK THE COLDGUARD KIT, REMOVE LID AND LAY ON SIDE AS INDICATED BY ARROW ON SIDE OF BOX.**

The ColdGuard Kit comprises the following parts:

<u>DESCRIPTION</u>	<u>PART#</u>	<u>QTY</u>
FRONT ROOF PANEL	VLS001	1
REAR ROOF PANEL	VLS002	1
FRONT FLOOR PANEL	VLS003	1
REAR FLOOR PANEL	VLS004	1
FRONT BULKHEAD	VLS005	1
DRIVERS SIDE FRONT WALL	VLS006	1
LEFT WHEEL ARCH PANEL	VLS007	1
RIGHT WHEEL ARCH PANEL	VLS008	1
LEFT 11.5" SIDE WALL PANEL	VLS009	1
RIGHT 11.5" SIDE WALL PANEL	VLS010	1
SIDE DOOR FRAME	VLS011	1
SIDE DOOR	VLS012	1
REAR DOOR FRAME	VLS013	1
REAR DOOR	VLS014	1
ALL NECESSARY FASTENERS, DOOR HARDWARE AND CAULKING		

For Extended Length Vans, the following extra panels are included in the kit:

DRIVERS SIDE WALL 20" INSERT PANEL	VLS016	1
CURBSIDE WALL 20" INSERT PANEL	VLS017	1
ROOF 20" INSERT PANEL	VLS018	1
FLOOR 20" INSERT PANEL	VLS019	1

TO INSTALL THIS KIT, YOU ENTER THE VAN WITH EACH PANEL THROUGH THE SIDE DOOR, BUILDING FROM THE REAR OF VAN TO THE FRONT.

THESE INSTRUCTIONS ARE DESIGNED FOR A TWO PERSON INSTALL CREW.

AS THE COLDGUARD KIT IS DESIGNED TO FIT DIFFERENT VEHICLES, IT MAY BE NECESSARY TO TRIM FOAM AT THE TOP OF THE WALL PANELS AND FUEL FILLER TO ENSURE PROPER FIT. PLEASE CONTACT US AT 905-634-9989 WITH ANY QUESTIONS.

DURING INSTALL , BE CAREFUL NOT TO OVERTIGHTEN ANY SCREWS WHEN ASSEMBLING KIT INSIDE THE VAN TO PREVENT EXCESS STRAIN ON THE PLASTIC. USE ONLY WAFERHEAD SCREWS FOR THE FLOOR LEVEL AREA.

Preparation of vehicle:

Remove floor mat, wheel jack and bracket, floor moldings, and passenger seat.

Move drivers seat and back rest forward.

Remove any interior light in cargo area and extend wiring by 18 inches.

Begin Install:

Outside of the van, attach left and right 11.5" side wall panels VLS 009 & VLS 010 to rear door frame VLS 013 using 2.5" pan head screws. Locating holes are pre drilled.

Attach door hardware and make sure handle is in upright position as shown below.



One installer should enter rear door panel with 11.5" panels attached through side door opening. The other installer should stay at the rear of the vehicle, on the outside ready to help position the doorframe.



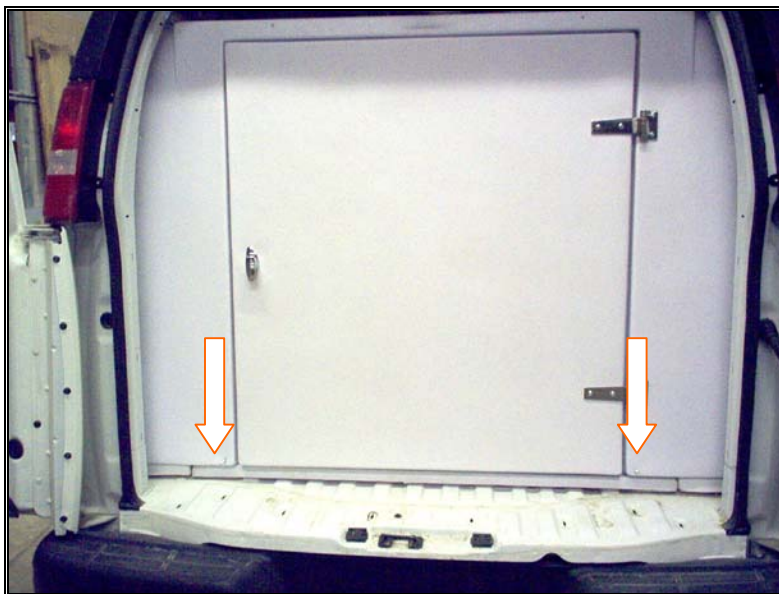
Locate at rear door opening. NOTE: Make sure that all wiring is clear of door frame



Enter rear floor panel VLS 004 through side door opening and position so the tongue of the floor is under the rear door frame. Note: Make sure the steel at the bottom of the door frame is tucked under the grey polyboard on rear floor panel. Install 3/16" rivets supplied.



Outside installer should secure with 2 panhead screws x 2.5", locating holes (shown below) have to be drilled through with 5/32 inch drill.



Secure 11.5" side wall panels to floor with 2 screws #12 x 2.5 inches waferhead plated. Make sure the outside installer is pushing the back of the 11.5" side panels inwards as the inside installer is drilling the holes to ensure tightest possible joint.

The second installer should now enter the van and hold the panels in place for the holes to be drilled to ensure a tight fit on the joints.

Place left and right hand wheel arch panels, VLS 007 and VLS 008 in position and secure with 3 # 10 x 2.5 inch pan head screws in each panel holding them to VLS 009 and VLS 010. Holes are to be drilled 5/32 inch. Secure panels VLS 007 and VLS 008 to floor panel VLS 004 using 3 #12 x 2.5" wafer head screws.



**INSTALL TIP - BACK OF PANEL SHOULD BE PUSHED BY SECOND INSTALLER WHEN FIRST INSTALLER IS DRILLING HOLES FOR SCREWS TO ENSURE TIGHT JOINTS.**

Load rear roof panel part #VLS 002 through side door opening, slide into position on top of wheel arch panels until it mates with rear door frame. Secure roof panel to rear door frame with 2 #10 x 2.5" pan head screws.

Secure roof to wheel arch panel with 3 #10 x 2.5" pan head screws, Holes to be drilled through with 5/32 inch drill.



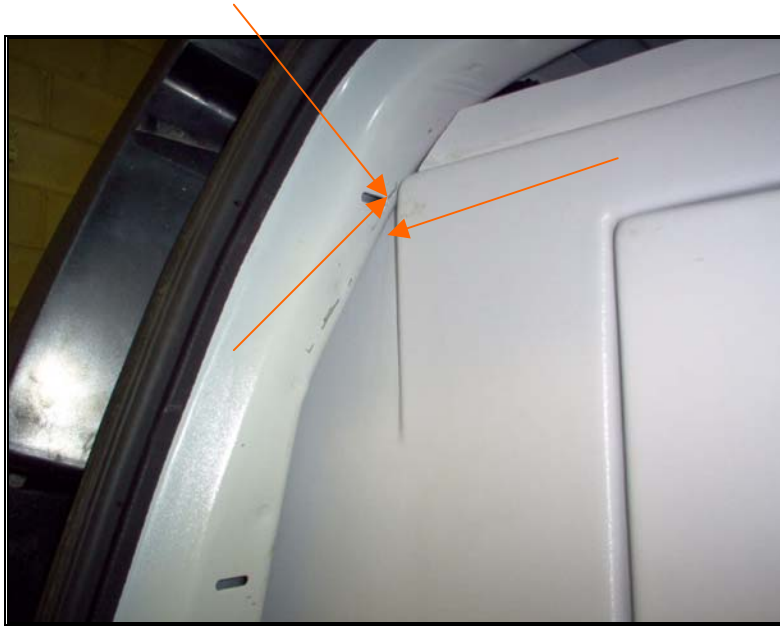
Secure VLS009 and VLS010 to roof panel with # 10 x 2.5 pan head screw.

Second installer should now go outside the van to the rear and secure the rear door frame to the roof with the 2 x #8 panhead screws (below)



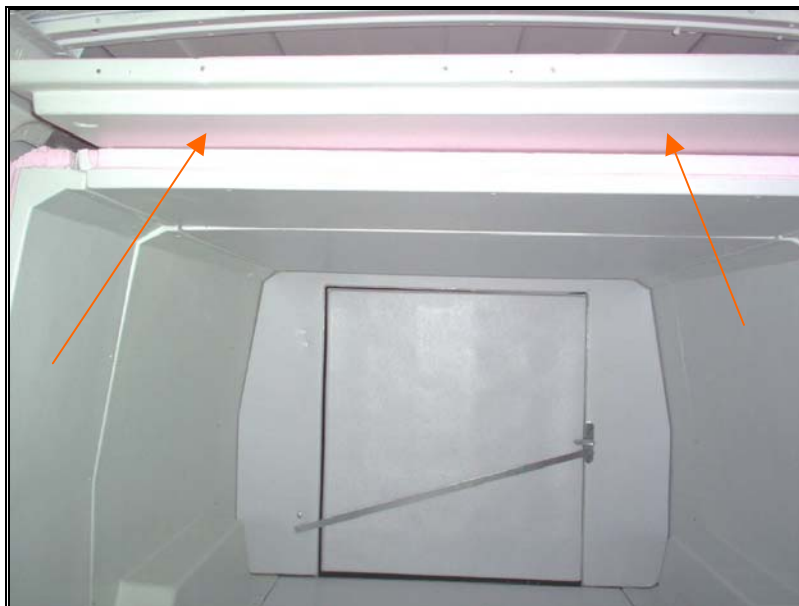
When fully secured, push whole assembly as far to the rear as possible. Check that all wiring is still clear.

The installer outside at the rear of the van should check to see if recess (highlighted below) is as tight to the van as possible.



Insert front bulkhead part # VLS 005 through side door opening and rest against back of seats.

Enter front roof panel part # VLS001 through side door opening, slide back over the rear roof panel (temporary storage only)

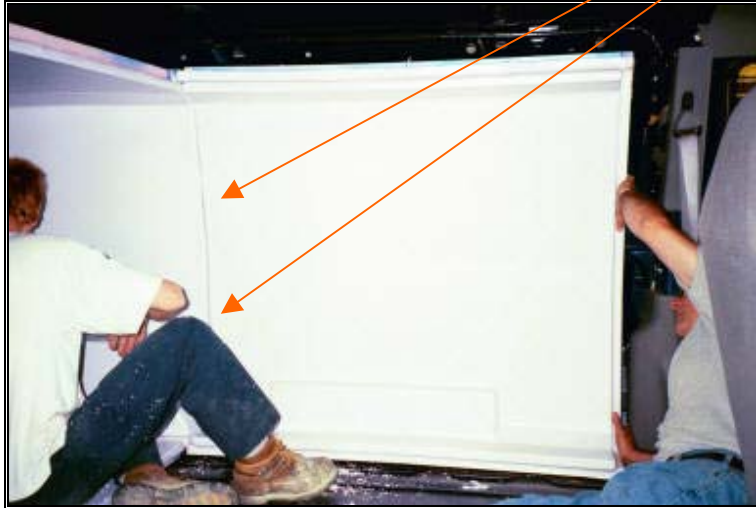




1. Secure 20" floor extension panel VLS 019 to VLS 004 floor panel with waferhead screws.
2. Secure Driver side 20" extension wall panel VLS 016 to VLS 007 Wheel arch panel with panhead screws.
3. Secure Passenger side 20" extension wall panel VLS 017 to VLS 008 Wheel arch panel with panhead screws
4. Secure 20" roof extension panel VLS 018 to VLS 002 roof panel with panhead screws as shown below.

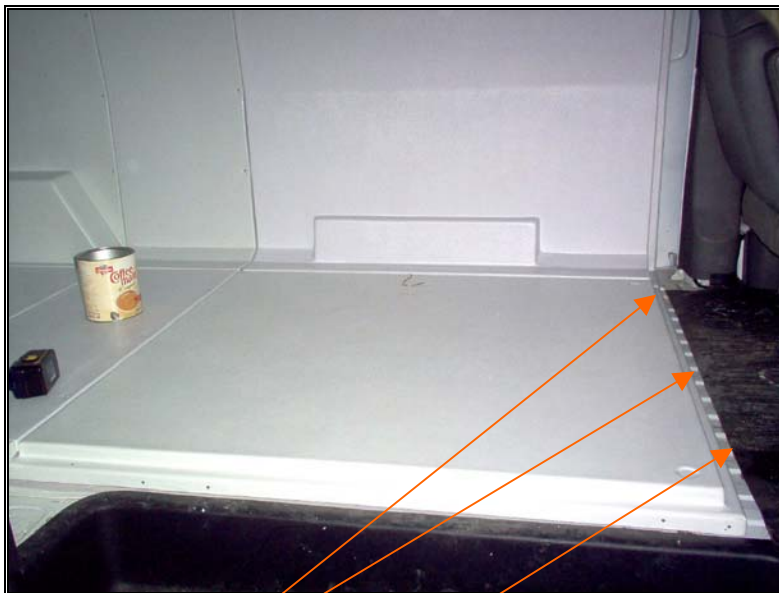


Enter front drivers side wall (fuel filler panel) part # VLS006 through side door opening and locate, secure with 2 # 10 2.5" panhead screws at rear only. Holes are to be drilled with 5/32 inch drill.



**Note:** It may be necessary to trim extra foam from around fuel filler for VLS006 to fit correctly. Contact T: 905-634-9989 for advice before trimming.

Enter front floor panel part # VLS003 through side door and locate with rear floor panel. Secure panel to rear floor panel and fuel filler panel with #12 x 2.5" waferhead screws. Holes are to be drilled with 5/32 inch drill.



To secure the kit to the van - Drill 3 holes, 5/32", in the front flange of the front floor panel (these holes should be in line with the ribs in the floor of the van and make sure you are not drilling into anything underneath the van) and secure with 3 #12 wafer head screws.

Insert front bulkhead VLS# 005 through side door opening and rest against back of driver and passenger seats. Push as far over to the drivers side. Temporary storage only.



Enter side door panel part # VLS011 and locate with curbside wheel arch panel and floor. Secure with #10 x 2.5" panhead screws on inside of door panel only.



With second installer in the drivers cab, locate bulkhead into position now with floor panel, fuel filler panel, and side door frame.



When bulkhead is in position the second installer in the drivers cab, holes should only be drilled and screwed down both sides of the bulkhead for the moment. (see below)



Slide front roof panel (which was stored above rear roof panel) forward and locate with front drivers side wall panel (fuel filler panel) and side door frame. Secure with #10 x 2.5" panhead screws.



Secure bulkhead to driver side wall panel, roof, floor, and side door panels with #10 x 2.5" pan head screws. All holes to be drilled 5/32 inch.



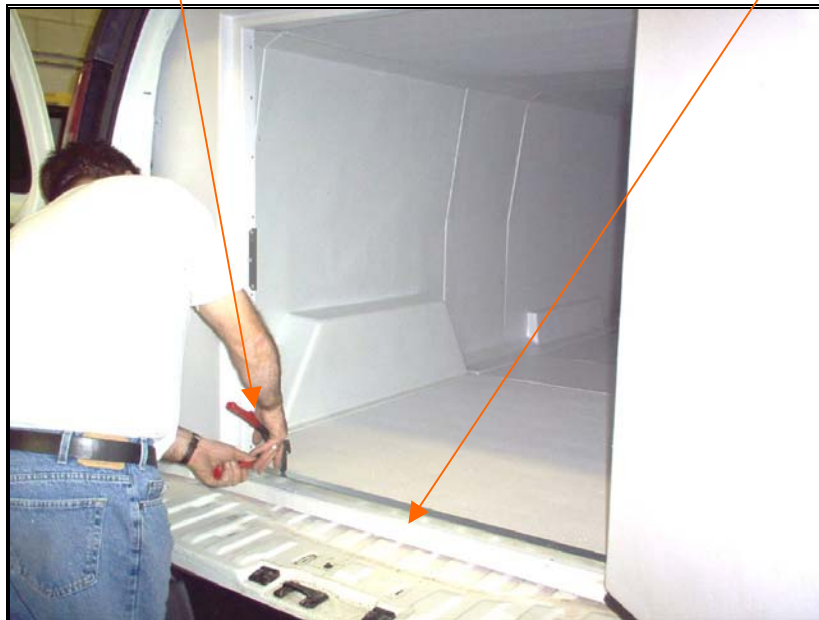
Secure side door panel assembly to floor and roof with #10 x 2.5" pan head screws.



Use sealant (supplied) to seal all joints in the body. **Allow sealant to cure properly as per manufacturer's instruction on sealant cartridge.**

Remove metal strap on the inside of the rear door.

Run a bead of sealant under steel angle supplied and lay on rear door step. Rivet this angle into place.



Rivet finishing angle at top of door frame as shown below.



INSTALL IS COMPLETE.

**DO NOT HESITATE TO CALL US DIRECTLY AT  
905-634-9989 FOR ANY ADVICE ON THE  
INSTALLATION**